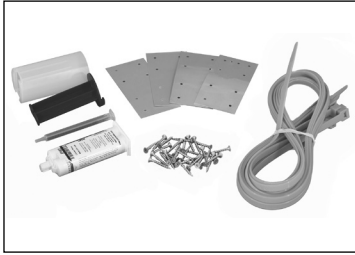


# Split Kit Installation Instructions for Round or Square Fiberglass Columns



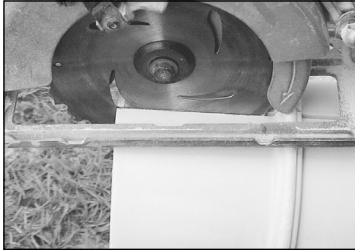
1. The Split Kit includes everything needed to install a Round or Square column.



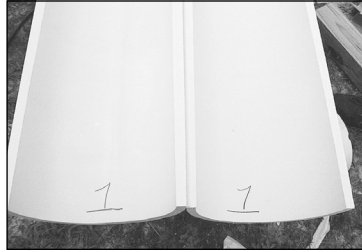
2. Measure opening where column is to be used. Mark column shaft and trim from bottom (see Round or Square fiberglass column installation instructions for cutting tips).



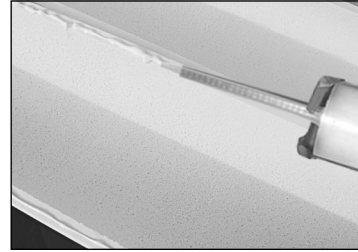
3. Trim column shaft from bottom using carbide tip blade. Smooth top surface and bottom cut with rasp or sanding block to assure flat surface contact. Leave min. 1/2" gap at top of column (See detail #1).



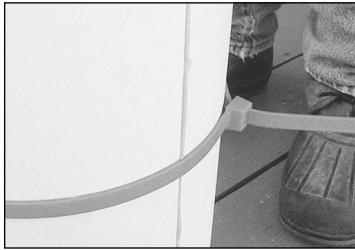
4. Factory splits stop short at each end of column. Complete splits on both sides using Carbide tipped blade. Make sure your cut matches width of kerf of factory cut.



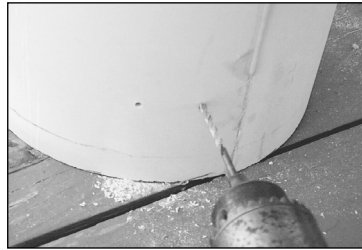
5. If installing more than one column, mark each half with a corresponding number or letter (ie #1, #2, A, B, etc.). If halves are mixed they will not fit together.



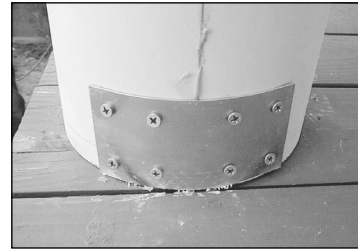
6. Prepare surface for adhesive by removing all debris with clean cloth. Apply adhesive to all connecting surfaces (both sides of each half).



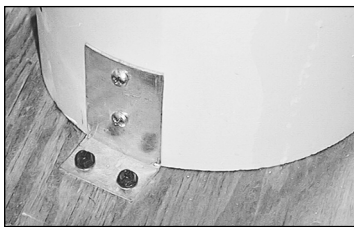
7. Place both halves around support post and secure using straps. Install straps by pulling tight. Place straps every 16" to 24" apart. Remove excess adhesive and fill any voids with remaining adhesive.



8. Place aluminum plates across split line at top and bottom of column. Mark and pre-drill holes using 7/64" bit.



9. Screw down one side of aluminum plate and then the other. Plate will bend around round columns. This should be done at top and bottom of both splits.



10. Install corner/ angle brackets (**not included**) at top and bottom of shaft. See Details #1 and #2 for bracket placement.



11. Apply remaining adhesive or any non-acetone construction adhesive to both sides and bottom of cap and base. Nail or screw halves together and caulk holes.

## After adhesive has fully cured;

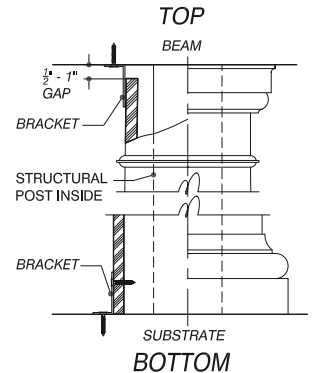
1. Cut away straps.
2. Fill any voids with remaining adhesive or automotive body filler.
3. Sand down hardened adhesive and automotive body filler with a palm sander or hand-held sanding block. Be careful to blend the sanded adhesive and filler with the surface of the column. Be careful to not create flat spots.
4. Caulk all joints and holes in cap and base.
5. Caulk joints where column meets cap and base.
6. Sand all joints and patches prior to painting.
7. Refer to ROUND or SQUARE Fiberglass Installation Instructions for surface preparation and painting instructions.

## TIPS

1. Some kits require joining of two straps to wrap around column.
2. Temporary shims can be used to help align column halves. Place shims under column or straps where needed to assist in alignment. Shims must be removed once glue has cured.
3. Do not force screws into fiberglass material. Tightening a screw too tight or forcing a screw into a hole too small can result in breaking the material.
4. If using split column shafts for pilaster, cut each aluminum plate into two pieces and bend to 90 degrees to mount shaft to wall.

## SPLIT COLUMNS ARE NOT LOAD BEARING.

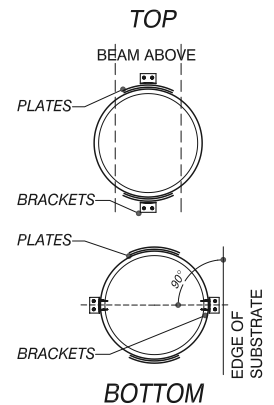
### Detail #1



### ATTACHMENT NOTE:

Attach to beam, **FRICTION FIT TOP ONLY**. Do not fasten top bracket to column.

### Detail #2



### ATTACHMENT NOTE:

Use tap-cons for substrate attachment and pan head screws for column attachment.

**DO NOT FASTEN TOP BRACKET TO COLUMN.**

